



Elevate Youth California: Youth Substance Use Disorder Prevention Program: Round 6 Standard Track Cohort 6 Funded Partner Overview Webinar



- If you have audio issues using computer speakers, join the audio by phone:
 - 1.Dial: +1 669 444 9171
 - 2.Meeting ID: 818 7037 2968
 - 3.Passcode: 564328
- All participants are muted.
- If you have questions during the webinar, submit them through the chat feature (click "Chat" at the top of the screen). Select "All Panelists" as the recipient.

We will begin soon!

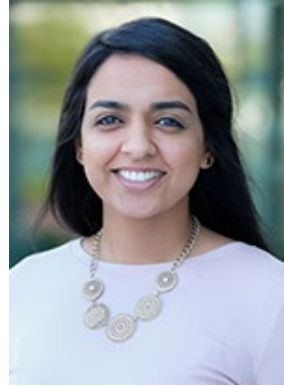


January 8, 2025

Elevate Youth California Program Team



Matt Cervantes
Associate Vice President
of Programs



Palvinder Kaur
Senior Program Officer



Shyra Murrey
Program Officer



Travis Wells
Senior Program
Associate



Antonia Gonzalez
Program Associate



Gerald White
Program Associate



Evelyn Gonzalez
Program Assistant



The Center's Evaluation Team



Maurice Samuels
Managing Director of
Evaluation and Learning



Noemi Avalos
Senior Evaluation Officer



Breanna Mattis
Senior Evaluation Associate



The Center's Communications Team



Samantha Garcia
Interim Associate Director



Lisa Weir
Senior Communications
Officer



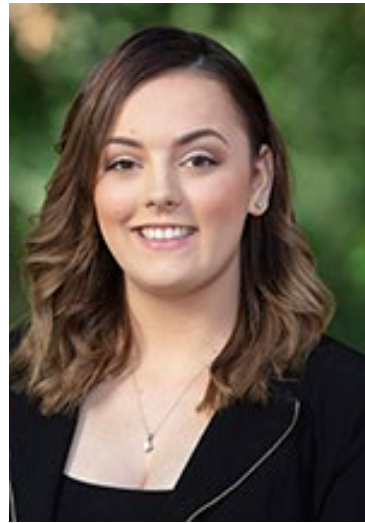
Madyson Taylor
Communications Associate



The Center's Contracts, Risks and Compliance and Finance Team



Joan Kassis
Managing Director of
Compliance & Contracts



Karissa Rogers
Contract Administrator II



Lucas Cole
Associate Controller



Keith Wilson
Senior Grant Accountant





Department of Health Care Services



Jessica Guerra
Section Chief
Community Services Division/Program
and Policy Section



Agenda

- Welcome
- Program Background
- Cohort Partners
- Communications Strategy
- Contract Agreement Process
- Insurance Requirements
- Overview of Grant Requirements
- Important Reminders
- Questions & Answers



Prop. 64 Background

- The Adult Use of Marijuana Act, known as Proposition 64 (Prop 64), was passed in November 2016. It legalized the possession, cultivation, and adult use of cannabis for persons aged 21 and older in California.
- Created new taxes on the cultivation and sale of marijuana.
- Revenues go into the California Marijuana Tax Fund.
- Sixty percent of the revenue is deposited into the Youth Education, Prevention, Early Intervention, and Treatment, also known as YEPEITA.
- The Prop 64 Advisory Group guides YEPEITA-funded activities.





Funding

Elevate Youth California (EYC) is a program of the California Department of Health Care Services (DHCS) funded through Prop 64 California Cannabis Tax Fund, Allocation 3, YEPEITA.

Sierra Health Foundation: Center for Health Program Management (The Center) is contracted to support the implementation of EYC. This statewide program provides funding and technical assistance for organizations that are developing or increasing community substance use disorder (SUD) prevention, outreach, and education focused on youth.



Elevate Youth California Program Goal

Grounded in social justice youth development, EYC supports a statewide network of organizations working on youth SUD prevention, education, and early intervention start-up activities and/or enhancement efforts in low-income urban and rural areas throughout California, with a focus on impacting policy, systems, and environmental change.



Elevate Youth California Program Goal

- EYC is a youth social justice mentoring and peer support program focusing on communities disproportionately impacted by the war on drugs.
- Examples of programming:
 - Youth-led organizing and student civic engagement.
 - Campaign to address a school or community concern.
 - Efforts to change a social condition through public policy.



Substance Use Disorder Prevention

- Prevention encompasses activities that promote healthy behaviors, reduce risks, and build protective factors.
- Harm reduction aims to reduce at-risk, moderate, and high-risk behaviors often associated with SUD.



Implementation Strategies

Projects must contain a component of **youth civic engagement** and at least one other mentorship and/or peer-led support and leadership program:

- Mentorship and relationship building.
- Peer-led support and leadership programs.



Funded Partners

Visit www.elevateyouthca.org to learn more.

Standard Track

Focusing on policy, systems and environmental change through youth civic engagement, mentorship, and peer-led support.

- 36 months
- Up to \$1 million
- Cohort 1: 26 projects = \$21.5 million
- Cohort 2: 32 projects = \$29.7 million
- Cohort 3: 61 projects = \$52.7 million
- Cohort 4: 61 projects = \$58.52 million
- Cohort 5: 75 projects = \$51.79 million
- Cohort 6: 95 projects = \$65.4 million






Funded Partners

Visit www.elevateyouthca.org to learn more.





Home About Program Impact News Resources Contact

Learn how our 44 Capacity Building Cohort 3 partners are implementing innovative projects for substance use disorder prevention for youth.

Action Network

Mendocino County, Sonoma County
\$247,030.00

To build organizational capacity to empower Native American and Latinx youth in Mendocino and Sonoma counties to become advocates through hands-on, youth-led projects focusing on social justice to strengthen communities and reduce substance use.

Akoma Unity Center

San Bernardino County
\$399,650.00

To build organizational capacity to empower Black and Latinx youth in San Bernardino County to become leaders through a peer-to-peer youth ambassador program to reduce substance use.

American Indian Child Resource Center

Alameda County
\$397,237.00

To build organizational capacity to empower Native American youth in Alameda County through peer mentorship, culturally rooted healing practices and youth activism to reduce substance use.

Anamatangi Polynesian Voices

San Mateo County, Santa Clara County
\$400,000.00

To build organizational capacity to support Native Hawaiian and Pacific Islander youth in San Mateo and Santa Clara counties through culturally responsive programming and restorative justice advocacy to reduce suspensions and substance use.

Anav Tribal Health Clinic

Siskiyou County
\$399,321.00

To build organizational capacity to increase access to culturally appropriate mental health services for American Indian/Alaska Native youth in Siskiyou County through advocacy and leadership training and campaigns to de-stigmatize mental health and reduce substance use.

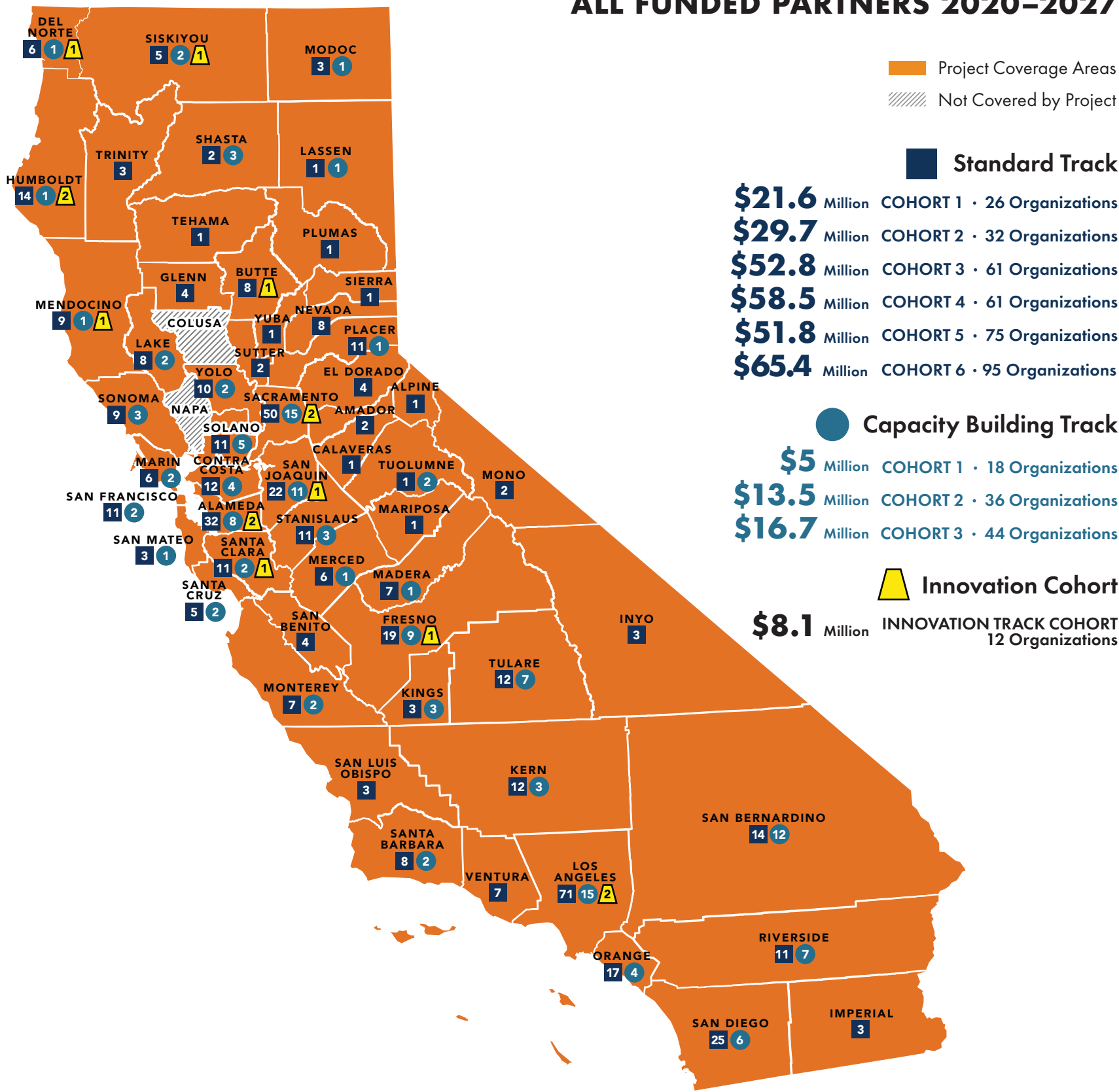
Big Valley Rancheria Band of Pomo Indians

Lake County
\$388,591.00

To build organizational capacity to empower Tribal youth in Lake County through peer-to-peer support to illuminate alternative pathways from the criminal justice system and reduce substance abuse.



ALL FUNDED PARTNERS 2020–2027



County	Standard	Capacity Building	Innovation
Alameda	32	8	2
Alpine	1	0	0
Amador	2	0	0
Butte	8	0	1
Calaveras	1	0	0
Colusa	0	0	0
Contra Costa	12	4	0
Del Norte	6	1	1
El Dorado	4	0	0
Fresno	19	9	1
Glenn	4	0	0
Humboldt	14	1	2
Imperial	3	0	0
Inyo	3	0	0
Kern	12	3	0
Kings	3	3	0
Lake	8	2	0
Lassen	1	1	0
Los Angeles	71	15	2
Madera	7	1	0
Marin	6	2	0
Mariposa	1	0	0
Mendocino	9	1	1
Merced	6	1	0
Modoc	3	1	0
Mono	2	0	0
Monterey	7	2	0
Napa	0	0	0
Nevada	8	0	0

County	Standard	Capacity Building	Innovation
Orange	17	4	0
Placer	11	1	0
Plumas	1	0	0
Riverside	11	7	0
Sacramento	50	15	2
San Benito	4	0	0
San Bernardino	14	12	0
San Diego	25	6	0
San Francisco	11	2	0
San Joaquin	22	11	1
San Luis Obispo	3	0	0
San Mateo	3	1	0
Santa Barbara	8	2	0
Santa Clara	11	2	1
Santa Cruz	5	2	0
Shasta	4	3	0
Sierra	1	0	0
Siskiyou	5	2	1
Solano	11	5	0
Sonoma	9	3	0
Stanislaus	11	3	0
Sutter	2	0	0
Tehama	1	0	0
Trinity	3	0	0
Tulare	12	7	0
Tuolumne	1	2	0
Ventura	7	0	0
Yolo	10	2	0
Yuba	1	0	0

Questions?



Communications Overview

- We need your partnership to share important messages about youth SUD prevention
 - Serve as a spokesperson for your work.
 - Share stories, photos, videos, media coverage, etc.
- Public announcements and social media.



Photo from Auburn Hip Hop Congress



Public Announcements

- Toolkit contains social media graphic templates and captions.
- Share your press releases with The Center communications team for review and support.



Funding Statement

For public announcements and materials about your work, please include this funding statement:

Elevate Youth California, a project of The Center at Sierra Health Foundation under contract with the State of California's Department of Health Care Services (DHCS), is funded through the DHCS Proposition 64 California Cannabis Tax Fund, Allocation 3, Youth Education Prevention Early Intervention and Treatment Account.

When space is limited, such as videos or social media, you may use this abbreviated funding statement:

This project is supported by Elevate Youth California and funded through Proposition 64.

If your work is supported by other funders, include them as well.

Media Toolkit

SAMPLE PRESS RELEASE



[Insert Your Logo to the right of the Elevate Youth California logo]

FOR IMMEDIATE RELEASE
DATE

Contact: Name
E-mail and Phone Number

Headline
Subheadline

Location (e.g., Sacramento, Calif.) – Opening paragraph: One to two sentences with the most newsworthy information – briefly, what is happening and to/with whom?

One paragraph: Why is this story important? Is there new or concerning or exciting data? What will be the impact on the community? Who will it impact?

Paragraph: Quote – Feature your organization's leadership, a partner, young person/community member.

One to two paragraphs: Background information – How will this happen? How does the program work? What is the timeline?

One or two more quotes or paragraphs to fill out the story, lift up voices essential to the storyline.

Final paragraph: Call to action – How can people get involved or learn more? Is there something you need the audience to do?

###

About Organization: One to two sentences about your organization. Learn more at [link to website](#).

Required Language

Always use this funding statement when referencing the funding for Elevate Youth California:

Elevate Youth California (EYC) is a program of the California Department of Health Care Services (DHCS) funded through Proposition 64 (Prop 64). This statewide program provides funding and technical assistance for organizations that are developing or increasing community substance use disorder prevention, outreach and education focused on youth. Sierra Health Foundation: Center for Health Program Management (The Center) is contracted to support the implementation of EYC.

DHCS Office of Communications will need to review and approve press releases prior to release.

If you have communications
questions or materials for us to review,
please reach out to
communications@shfcenter.org
and copy elevateyouthca@shfcenter.org.



Questions?



Contract Agreement Process and Insurance Requirements



Contract Agreement Process

- E-mail from CongaSign with a link to your organization's subrecipient agreement.
- Review contract agreement.
- Sign contract agreement via CongaSign.
- E-mail from The Center at Sierra Health Foundation via TrustLayer with insurance requirements.



Insurance Requirements

- Insurance compliance documents must be submitted to The Center within 30 days of executing your agreement.
- Insurance must be maintained through the duration of the project and renewed if necessary.
- If your organization is unable to obtain the required insurance or has insurance questions, contact insurancecompliance@sierrahealth.org as soon as possible for assistance.
- **Important: Additional insureds must be written exactly as stated in your contract agreement AND payments will not be released until accurate and complete insurance requirements are received.**



Insurance Evidence Requirements

- Commercial General Liability.
- Each occurrence must be greater or equal to \$1,000,000.
- Coverage Trigger: Occurrence must be present.
- General Aggregate must be greater or equal to \$2,000,000.
- Products/Completed Operations Aggregate must be greater or equal to \$2,000,000.
- Primary and Non-Contributory Endorsement must be present.
- Additional Insured Endorsement must be present, naming The Center, Sierra Health Foundation, Department of Health Care Services, The State of California, their respective officers, directors, agents, representatives, constituent entities, affiliates, volunteers, officials, parents, subsidiaries, and employees.



Insurance Evidence Requirements

Automobile Liability

- Combined Single Limit (each accident) must be greater or equal to \$1,000,000.
- Coverage applies to Owned, Hired, and Non-owned Autos.
- Additional Insured Endorsement must be present naming The Center, Sierra Health Foundation and The State of California.

Worker's Compensation and Employer's Liability

- Statutory Limits must be present.
- Employer's Liability Each Accident must be greater or equal to \$1,000,000.
- Employer's Liability Disease – each employee must be greater or equal to \$1,000,000.
- Employer's Liability Disease – policy limit must be greater or equal to \$1,000,000.
- Waiver of Subrogation Endorsement must be present.

Professional Liability

- Each Claim must be greater or equal to \$1,000,000.
- Aggregate must be greater or equal to \$2,000,000.



Insurance Evidence Requirements

Additional Requirements

- Certificate Holder must read: Sierra Health Foundation, 1321 Garden Highway Sacramento, CA 95833.
- Description of Operations must read: The Center, Sierra Health Foundation, The State of California, their respective officers, directors, agents, representatives, constituent entities, affiliates, volunteers, officials, parents, subsidiaries, and employees shall be added as Insureds (“additional Insureds”) under each commercial general liability and automobile insurance policy. **Agreement #24-40039** must be present.



Certificate of Liability Insurance/COI

SAMPLE

ACORD® CERTIFICATE OF LIABILITY INSURANCE DATE (MM/DD/YYYY)

THIS CERTIFICATE IS ISSUED AS A MATTER OF INFORMATION ONLY AND CONFERS NO RIGHTS UPON THE CERTIFICATE HOLDER. THIS CERTIFICATE DOES NOT AFFIRMATIVELY OR NEGATIVELY AMEND, EXTEND OR ALTER THE COVERAGE AFFORDED BY THE POLICIES BELOW. THIS CERTIFICATE OF INSURANCE DOES NOT CONSTITUTE A CONTRACT BETWEEN THE ISSUING INSURER(S), AUTHORIZED REPRESENTATIVE OR PRODUCER, AND THE CERTIFICATE HOLDER.

IMPORTANT: If the certificate holder is an ADDITIONAL INSURED, the policy(ies) must be endorsed. If SUBROGATION IS WAIVED, subject to the terms and conditions of the policy, certain policies may require an endorsement. A statement on this certificate does not confer rights to the certificate holder in lieu of such endorsement(s).

PRODUCER	CONTACT NAME: PHONE (A/C No. Exp): E-MAIL: ADDRESS:	FAX (A/C No.):
INSURED	INSURER(S) AFFORDING COVERAGE	NAIC #
	INSURER A:	
	INSURER B:	
	INSURER C:	
	INSURER D:	
	INSURER E:	
	INSURER F:	

COVERAGES CERTIFICATE NUMBER: REVISION NUMBER:

INSURANCE LISTED BELOW HAVE BEEN ISSUED TO THE INSURED NAMED ABOVE FOR THE POLICY PERIOD INDICATED. THE INSURANCE AFFORDED BY THE POLICIES DESCRIBED HEREIN IS SUBJECT TO ALL THE TERMS, EXCLUSIONS AND CONDITIONS OF SUCH POLICIES. LIMITS SHOWN MAY HAVE BEEN REDUCED BY PAID CLAIMS.

INSR LTR	TYPE OF INSURANCE	ADDL SUBR (INSR WVD)	POLICY NUMBER	POLICY EFF (MM/DD/YYYY)	POLICY EXP (MM/DD/YYYY)	LIMITS
	GENERAL LIABILITY					EACH OCCURRENCE \$
	COMMERCIAL GENERAL LIABILITY					DAMAGE TO RENTED PREMISES (Ea occurrence) \$
	CLAIMS-MADE					MED EXP (Any one person) \$
						PERSONAL & ADV INJURY \$
						GENERAL AGGREGATE \$
						PRODUCTS - COMP/OP AGG \$
	GEN'L AGGREGATE LIMIT APPLIES PER:					\$
	POLICY					\$
	PRO- RCT					\$
	LOC					\$
	AUTOMOBILE LIABILITY					COMBINED SINGLE LIMIT (Ea accident) \$
	ANY AUTO					BODILY INJURY (Per person) \$
	ALL OWNED AUTOS					BODILY INJURY (Per person) \$
	HIRED AUTOS					PROPERTY DAMAGE (Per accident) \$
						\$
	UMBRELLA LIAB					EACH OCCURRENCE \$
	EXCESS LIAB					AGGREGATE \$
						\$
	DED					\$
	RETENTION \$					\$
	WORKERS COMPENSATION AND EMPLOYERS' LIABILITY					WC STATUS: [] OTHER []
	ANY PROPRIETOR/PARTNER/EXECUTIVE OFFICER/ MEMBER EXCLUDED? (Mandatory in NH)	Y/N	N/A			EL EACH ACCIDENT \$
	If yes, describe under DESCRIPTION OF OPERATIONS below					EL DISEASE - EA EMPLOYEE \$
						EL DISEASE - POLICY LIMIT \$

Questions?



Overview of Grant Requirements



Deliverable-Based Payment Schedule

Requirement	Schedule
Receipt of Agreement & Insurance Compliance Requirements.	First Payment (35% of the award amount total)
1. Final Work Plan 2. Progress Reports 1-2 3. Financial Report 1-2 Detailed Expenditure Listing will be required.	Second Payment (35% of the award amount total)
1. Progress Reports 3-4 2. Financial Report 3-4 Detailed Expenditure Listing will be required.	Third Payment (25% of the award amount total)
1. Progress Reports 5-6 2. Financial Reports 5-6 Detailed Expenditure Listings will be required.	Fourth Payment (5% of the award amount total)



Overview of Requirements

- Work Plan
- Bi-Annual Progress Reports
- Bi-Annual Financial Reports
- Detailed Expenditure Listing
- Cumulative Final Report – Quantitative, Qualitative, Financial
- Participation in:
 - In-person convenings and virtual technical assistance sessions, including Lobbying vs Advocacy Training within the first six (6) months, and participation in a minimum of five (5) trainings and/or office hours annually.
 - External Evaluation.



Bi-Annual Progress Report

- Quantitative: partnerships, demographics
- Program Events/Activities
- Narrative: participant outcomes and progress toward policy goals




Bi-Annual Financial Report


- Financial reporting template.
 - Connected with the approved budget.
 - Show line-item spending within the reporting period.
- Keep supporting documentation for expenditures for the Detailed Expenditure Listing requirement.



Bi-Annual Financial Report



THE CENTER
at Sierra Health Foundation



elevate
YOUTH CALIFORNIA

YC Round 6 Standard Track Budget

Organization Name: Please enter your Organization's name here

Subcontract Number: Please enter contract number here

Award Amount: Please enter amount here

	Budget Year 1 1/1/2025- 12/31/2025	Budget Year 2 1/1/2026- 12/31/2026	Budget Year 3 1/1/2027- 12/31/2027	Total Budget
<i>Please enter your most recently approved budget in columns B, C, D, and E. Shading denotes a protected cell.</i>				
I. Personnel				
Salaries				
1				\$0.00
2				\$0.00
3				\$0.00
4				\$0.00
5				\$0.00
6				\$0.00
7				\$0.00
8				\$0.00
9				\$0.00
10				\$0.00
11				\$0.00
12				\$0.00
13				\$0.00
Payroll Taxes and Benefits				\$0.00
I. Total Salary and Benefits	\$0.00	\$0.00	\$0.00	\$0.00
II. Consultant Fees				
1				\$0.00
2				\$0.00
3				\$0.00
4				\$0.00
II. Total Consultants	\$0.00	\$0.00	\$0.00	\$0.00
III. Other Expenses				
Office Supplies				\$0.00
Postage				\$0.00
Printing/Duplicating				\$0.00
Information/Materials				\$0.00
Equipment				\$0.00
Rent / Utilities				\$0.00
Travel				\$0.00
Miscellaneous (List)				
1				\$0.00
2				\$0.00
3				\$0.00
4				\$0.00
5				\$0.00
6				\$0.00
7				\$0.00
8				\$0.00

< >
Please Enter Budget Here
Expenditure Listing
YC Financial Report_AllYears
Financial Report_AllPeriods
Budget Mod Request (as needed)

Detailed Expenditure Listing/ General Ledger (GL)

- List of all financial transactions allocated to the grant.
- Include for each EYC expense:
 - Budget category
 - Expense date
 - Amount
 - Vendor
 - Expense description
- Separate accounting is required.
- Receipts, invoices, and timecards to be made available upon request.



Unallowable Expenses

- Debt retirement
- Operational deficits
- Partisan activities
- Religious organizations for explicit religious activities
- Activities that exclusively benefit the members of sectarian or religious organizations.
- Purchase of vehicles
- Purchase, construction, or permanent improvement (other than minor remodeling of any building, other facility, or land).
- Purchase of properties
- Directly or indirectly, purchase, prescribe, or provide marijuana or treatment using marijuana.



Notable EYC Prior Written Approvals/Guidance

- Travel
 - All overnight travel must follow [CalHR Travel Reimbursement guidelines](#).
 - Out-of-state travel requires written pre-approval; to submit a travel request, email elevateyouthca@shfcenter.org six weeks prior to the desired start of travel.
 - Overcoming transportation barriers: limit of \$50 per year/participant to ride-sharing transportation apps such as Uber, Lyft, etc. for travel relating to EYC.
- Subcontracts greater than \$5,000; please send copies of contracts with EYC portions greater than \$5,000 to eycfinance@sierrahealth.org.
- Capital purchases are almost always unallowable (see Unallowable Expenses on the previous slide).



Cumulative Final Report

- Quantitative
- Narrative
- Financial



Reporting and Data Requirements

Partners will be required to submit **bi-annual progress reports** responding to the performance measures identified in their grants and work plan, including **bi-annual financial reports**.

Report	Period	Due Date to The Center
Progress Report 1	1/1/2025 - 6/30/2025	7/31/2025
Financial Report 1 and Detailed Expenditure Listing	1/1/2025 - 6/30/2025	7/31/2025
Progress Report 2	7/1/2025 - 12/31/2025	1/30/2026
Financial Report 2 and Detailed Expenditure Listing	7/1/2025 - 12/31/2025	1/30/2026
Progress Report 3	1/1/2026 - 6/30/2026	7/31/2026
Financial Report 3 and Detailed Expenditure Listing	1/1/2026 - 6/30/2026	7/31/2026
Progress Report 4	7/1/2026 - 12/31/2026	1/29/2027
Financial Report 4 and Detailed Expenditure Listing	7/1/2026 - 12/31/2026	1/29/2027
Progress Report 5	1/1/2027 - 6/30/2027	7/30/2027
Financial Report 5 and Detailed Expenditure Listing	1/1/2027 - 6/30/2027	7/30/2027
Progress Report 6 and Cumulative Final Report	7/1/2027 - 12/31/2027	1/21/2028
Financial Report 6 and Detailed Expenditure Listing	7/1/2027 - 12/31/2027	1/21/2028

Report Submission Process

- We will share the progress report template, financial report template, and submission process in separate webinars.



Budget Modification Process

We recognize that costs may have changed since applications were submitted. Partners may submit budget modification requests to more closely align with actual costs and expenditures.

- Only able to shift funds to allowable items under the funding opportunity.
- If you are adding new line items or if a section total changes by more than 10% you will be required to submit a budget modification.
- There is a required template and process for the budget modification.
- Please send all requests to pkaur@sierrahealth.org and copy elevateyouthca@shfcenter.org.



Questions?



In-person/ Virtual Convenings

- Technical Assistance Webinars and Office Hours
- Virtual Networking Sessions
- Virtual Quarterly Learning Communities
- In-person Convenings TBD



Youth Listening Sessions

- Host a minimum of one youth listening session with impacted youth each year of project implementation.
- Feedback on strategy and project implementation.



Technical Assistance, Webinars, and Resources

www.elevateyouthca.org

Resources

Technical Assistance Links to technical assistance resources

Webinars

Partner Session: BrightLife Kids and Soluna Informational Session

July 11, 2024

This webinar, led by BrightLife Kids and Soluna, is an overview of two CalHOPE programs delivering private, virtual behavioral health coaching and resources for youth ages 0-25.

[Pioneering Behavioral Health Support for Young Californians \(PDF\)](#)



Elevate Youth California Round 5 Standard Track Grantee Orientation Webinar

April 8, 2024

[Elevate Youth California Round 5 Standard Track Grantee Orientation Webinar \(PDF\)](#)



Training Webinars

Grant Writing Toolkit

July 30, 2024

This webinar, led by Leverage Point Development Inc., provides resources and tips for seeking funding opportunities aligned with organizational values and ways to prepare for application submission.

[Grantwriting Toolkit \(PDF\)](#)



Grant Writing Fundamentals

July 24, 2024

This webinar, led by Leverage Point Development Inc., explores key components and critical tools for crafting an effective grant proposal.

[Grantwriting Fundamentals \(PDF\)](#)



All EYC Cohorts Alchemer Training

May 21, 2024

This webinar, led by The Center, is an overview of the Elevate Youth California designated Progress Report submission platform, Alchemer.

[Alchemer Overview \(PDF\)](#)

Elevate Youth California Progress Report Overview

April 30, 2024

This webinar, led by The Center, is an overview of the Elevate Youth California Progress Report Tool for funded partners.

[Nonprofit Finance Fund: Understanding Cash Flow Planning Webinar \(PDF\)](#)

Partner Learning and Engagement

- Networking sessions
- Webinars
- One-on-one sessions



Important Reminders

- Timeline of initial payment
- Communications
- Items to stay on top of:
 - Updated budget, budget justification, and work plan.
 - Executed contract agreement
 - Securing insurance
 - Reporting
 - Listening sessions
 - Virtual and in-person convenings.
 - Resources



Contacts and Resources

Contact:

If you have questions e-mail: elevateyouthca@shfcenter.org

Include your Contract ID on all EYC-related correspondence.

Resources:

EYC website: www.elevateyouthca.org

The Center website: www.shfcenter.org





YOUTH CALIFORNIA



CALIFORNIA DEPARTMENT OF
HEALTH CARE SERVICES



THE CENTER

at Sierra Health Foundation

Thank You!

