



Welcome!

Introductions and Welcoming





Our Offices:

Marin - Me-Wuk (Coast Miwok) Land

San Francisco & San Mateo - Muwekma, Ohlone, & Ramaytush Land

Merced, Madera, & Fresno - Yokuts Land

Long Beach - Tongva (Gabrieleno) Land

Eastern Coachella Valley - Cahuilla Land

We want to acknowledge that we are on the traditional territory of many Indigenous Nations.

Native Land brings about discussions of colonization, land rights, language, and Indigenous history tied to our personal histories.

Looking at the land from an Indigenous perspective means acknowledging that the land is a living being - this understanding both gives us insight into and increases our awareness of how we treat and interact with the land.

via Native-Land.ca

We invite each of you to share the land you are currently on in the chat.

Youth Leadership Institute

Young people – particularly youth of color and their allies – are deeply motivated to address inequities in their communities.

At Youth Leadership Institute, young people realize their power by learning to use their voices to create meaningful change.

Learn more at yli.org.



Intro to Youth Leadership



MEET OUR TEAM

Intro to Youth Leadership



April Hoogasian
Director of TCS



Yami Rodriguez
TCS Trainer



Montserrat Garcia Bedolla
Southern CA Director



Yante Turner
Trainer & Consultant



Jen Daroya
Executive Assistant



Kody Stoebig
Communications Manager



Fátima Ramirez
Senior Social Media Coordinator



Wendy Pacheco
Trainer and Consultant



Chat Introductions

- Name
- Pronouns
- Org you're representing
- What color best describes you today?





Community Agreements

- TAKE CARE OF YOURSELF
- MUTE WHEN YOU'RE NOT SPEAKING
- EMBRACE THE AWKWARDNESS
- BE PRESENT TO LISTEN AND LEARN
- TAKE SPACE, MAKE SPACE
- HAVE FUN!

Issue Identification





Today, we will...

- Explore issues important to communities in the room
- Learn about tools that help understand levels of issue areas
- Identify Root Causes of issue areas
- Brainstorm policy or campaign ideas to address root causes of issues





Community Builder - Breakouts

WHAT ARE SOME OF THE MOST IMPORTANT ISSUES IN YOUR COMMUNITY?

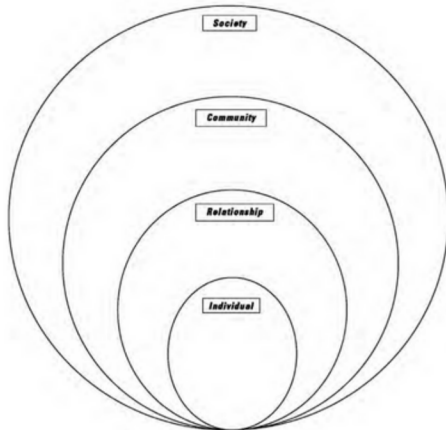
AS A GROUP, NARROW DOWN TO 1-2 ISSUE AREAS THAT YOU WANT TO ADDRESS AS A GROUP.

*The possibilities are endless!
Let your creativity shine!*



The Ecological Model

The Ecological Model: Root Causes



WHAT DO THE DIFFERENT LEVELS MEAN?

Individual

- Looks at biological and personal history factors that influence how **individuals** behave and are affected by an issue.
- Some of these factors could be:
 - Age, education, income, gender, etc.
 - Substance abuse
 - History of experiencing abuse
 - Personality traits

Relationship

- Looks at close **relationships**, such as those between:
 - Family
 - Boyfriends/girlfriends
 - Friends
 - Peers
- Explores how these relationships influence a person's behavior and actions.

Community

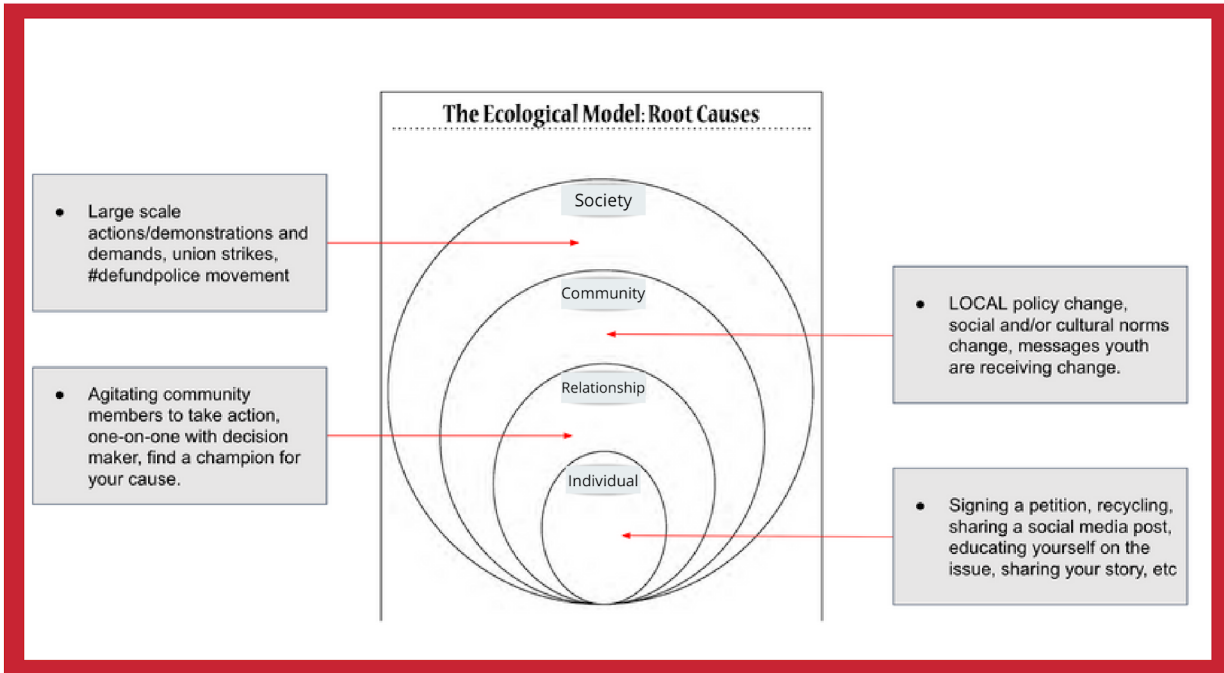
- Looks at the contexts and **communities** in which these relationships occur.
- Some of these "contexts" could be:
 - Schools
 - Neighborhoods
 - Workplaces
 - Churches
- This level looks at how these "contexts" influence relationships between people.

Society

- This level looks at the broad **societal** factors that help create a climate that supports or inhibits a problem or issue.
- This level includes things like:
 - Social and cultural norms
 - Availability of weapons
 - Health, social, economic, and educational laws



Thinking of Solutions



A Tale of Two Zip Codes

A Tale of Two Zip Codes

A TALE OF TWO ZIP CODES

with **GEORGE TAKEI**

MEET DEB & MARIA
Deb & Maria live one mile apart, but Deb will live 18 years longer than Maria.

Watch to find out why!

Watch on YouTube

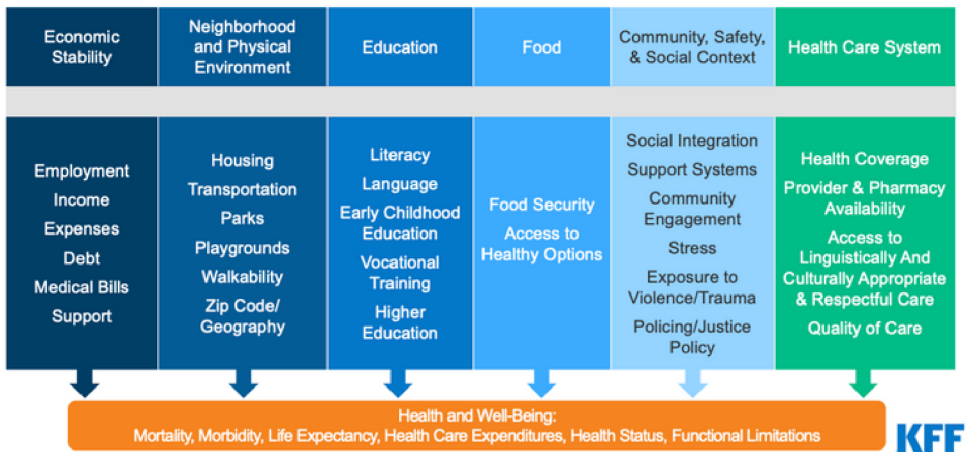
Share



Social Determinants of Health

Figure 1

Social Determinants of Health



Issue Identification



Roots and Branches

ROOT CAUSE TREE

Name: _____ Date: _____ Class: _____

ROOT CAUSE TREE

SYMPTOMS

▲

THE BIG ISSUE

ROOT CAUSES

Many of the challenges you might find in your community are symptoms of the same big issue. This issue, in turn, is the result of several **root causes**. Use this tree diagram to place together your issue with its symptoms and root causes.

Your best shot at effectively tackling an issue is to go after one of its root causes. Think about not only what causes the issue to exist, but also what things make it worse. These can be considered root causes as well.

- Sometimes what we see as “issues” in the community are actually **symptoms**.
- These symptoms are rooted in various root causes.
- These **root causes** are what we must address if we want the symptoms to disappear

How do I know what is a symptom or a root cause?

- A symptom will often put the responsibility on the **individual** to change (an attitude, behavior) vs a root cause will be part of a system (schools, government, etc) that needs to change and requires a **community** effort to address.
 - A root cause may not only cause the issue, but it has the ability to make it worse.

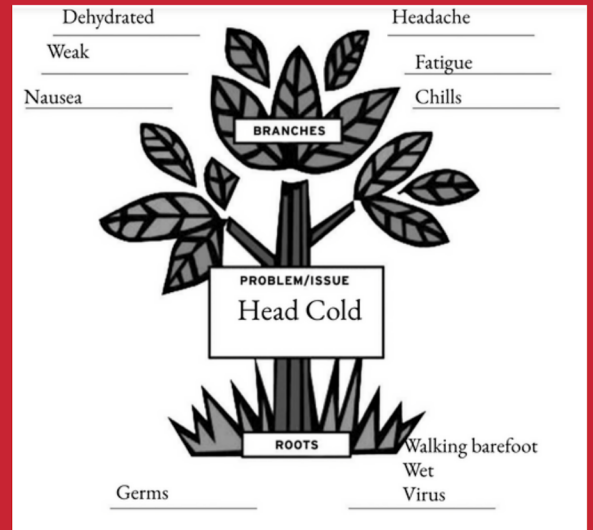




Roots and Branches

IN THE GROUP,

USE THE COPY OF THE ROOTS AND BRANCHES GOOGLE SLIDES TO DO THE ROOTS AND BRANCHES DIAGRAM FOR YOUR 1-2 TOPICS PREVIOUSLY IDENTIFIED.



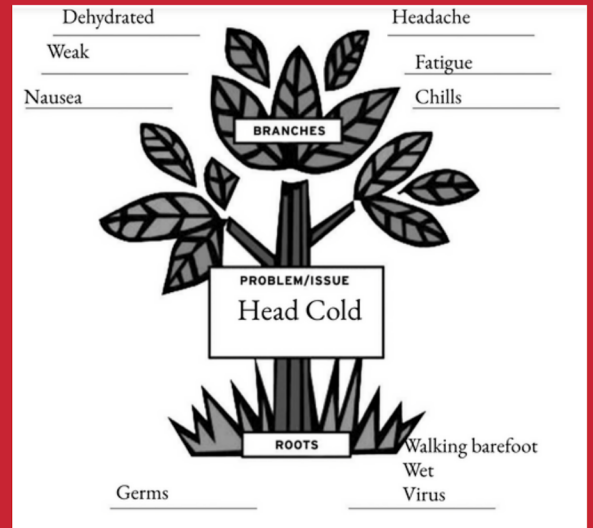
Potential Strategies

ENVIRONMENTAL PREVENTION

- **MEDIA**
- **ACCESS**
- **POLICY/LAWS**
- **SOCIAL/COMMUNITY NORMS**

PHOTOVOICE PROJECT

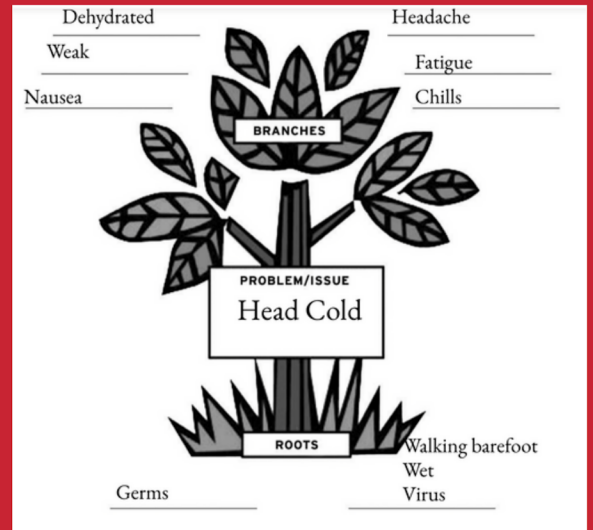
COMMUNITY FORUM/TOWNHALL



Focusing on the Roots

IN THE JAMBOARD,

SHARE WITH US YOUR MAIN TOPIC AND 1-3 WAYS YOU CAN ADDRESS THIS TOPIC.



Elevate Training



← Click here to add a post it note

← Click here to add an image

← Click here to add a text box





Today we ...

- Explored issues important to communities in the room
- Learned about tools to help understand levels of issue areas
- Identified Root Causes of issue areas
- Brainstormed policy or campaign ideas to address root causes of issues

TRAINING EVALUATION:





THANK YOU!