



Welcome!

Intro to Youth Leadership



TRAINING & CONSULTING SERVICES
BY YOUTH LEADERSHIP INSTITUTE



YOUTH LEADERSHIP INSTITUTE
Use Your Voice



We want to acknowledge that we are on the traditional territory of many Indigenous Nations.

Native Land brings about discussions of colonization, land rights, language, and Indigenous history tied to our personal histories.

Looking at the land from an Indigenous perspective means acknowledging that the land is a living being - this understanding both gives us insight into and increases our awareness of how we treat and interact with the land.

via Native-Land.ca

We invite each of you to share the land you are currently on in the chat.

Our Offices:

Marin - **Me-Wuk (Coast Miwok) Land**

San Francisco & San Mateo - **Muwekma, Ohlone, & Ramaytush Land**

Merced, Madera, & Fresno - **Yokuts Land**

Long Beach - **Tongva (Gabrieleno) Land**

Eastern Coachella Valley - **Cahuilla Land**

Youth Leadership Institute

Young people – particularly youth of color and their allies – are deeply motivated to address inequities in their communities.

At Youth Leadership Institute, young people realize their power by learning to use their voices to create meaningful change.

Learn more at yli.org.



MEET OUR TEAM

Intro to Youth Leadership



Patty Barahona
Chief Executive Officer



Yami Rodriguez
TCS Trainer



Montserrat Garcia Bedolla
Southern CA Director



Yante Turner
Trainer & Consultant



Elaine Aguilar
Executive Assistant



Kody Stoebig
Communications Manager



Fátima Ramirez
Senior Social Media Coordinator



Introductions

- Name
- Pronouns
- Org you're representing
- What is one word your bestie would use to describe you?



Community Agreements

— TAKE CARE OF YOURSELF

— MUTE WHEN YOU'RE NOT
SPEAKING

— EMBRACE THE AWKWARDNESS

— BE PRESENT TO LISTEN AND
LEARN

— TAKE SPACE, MAKE SPACE

— HAVE FUN!



Today, we will...

- Learn about the power of youth leadership and advocacy
- Explore the qualities and skills of an effective leader
- Learn about your own leadership style through yli's True Colors leadership assessment
- Explore the leadership styles of your team/group.



Hopes for you...

- To learn aspects of leadership to support youth growing into strong leaders in their community
- To learn about the importance of youth leadership and advocacy
- To learn how to empower youth to remain active in their communities
- To understand the different styles of youth leadership's practices and modules





Elevate Training



← Click here to add a post it note



← Click here to add an image



← Click here to add a text box



TCS





Community Builder

WHAT WORDS OR IMAGES
COME TO MIND WHEN YOU
HEAR THE WORDS YOUTH
POWER?

Drop a post it note on the jamboard
with your words or images.

The possibilities are endless!
Let your creativity shine!



Youth Power Poll

"Youth have all the power they need in society."

AGREE



DISAGREE



Youth Power Poll

"Youth do not have enough
life experience to make
informed decisions."

AGREE



DISAGREE



Youth Power Poll

"Youth voice is powerful."

AGREE



DISAGREE



5 Minute Break



Youth Power & Leadership

YOUNG PEOPLE BRING
POSITIVE, MEANINGFUL
CHANGE TO OUR
COMMUNITIES

YOUTH VOICE IS POWERFUL!

Young people...

- have been at the front of every movement for justice and equity
- are experts in their communities
- have creative ideas and solutions



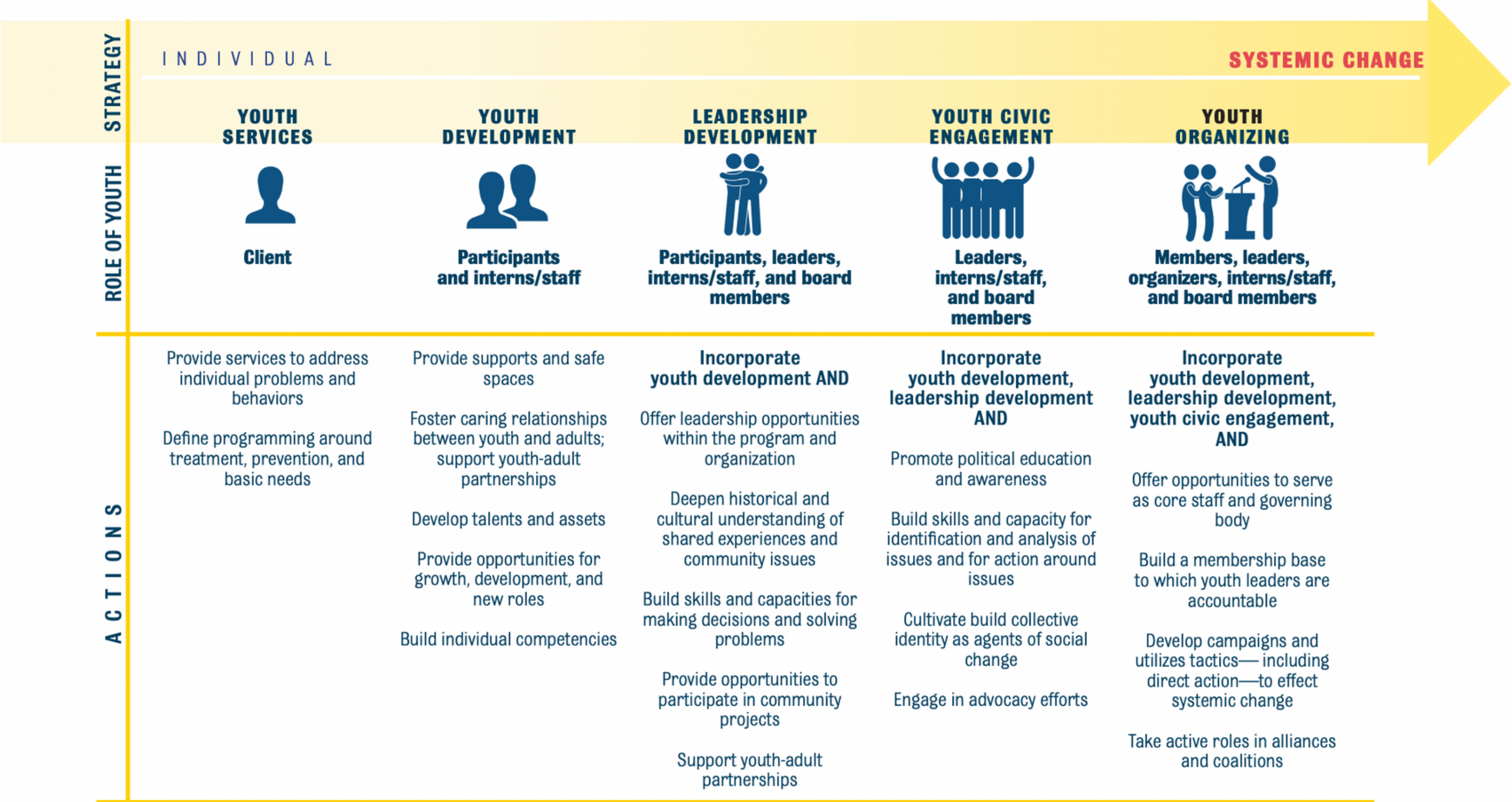
In the early 1990s Karen Pittman, an early advocate for positive youth development, coined the phrase "Problem-free isn't fully prepared".

Pittman led the charge to shift the paradigm in youth work from preventing and "fixing" behavior deficits to building and nurturing "all the beliefs, behaviors, knowledge, attributes, and skills that result in a healthy and productive adolescence and adulthood".

Her approach was supported by resiliency research as well as the emergence of 40 developmental assets identified by Search Institute.



Youth EngagementContinuum



"Youth power, the ability for young people to direct influence and authority over their lives and circumstances, is a natural evolution of youth voice. When young people and their adult allies work together, magic happens to move our communities forward."

(via Remake Learning)





The skills and qualities of

LEADERS



What makes someone a leader?

CREATIVITY



Amanda Gorman

STRENGTH



Malala Yousafzai

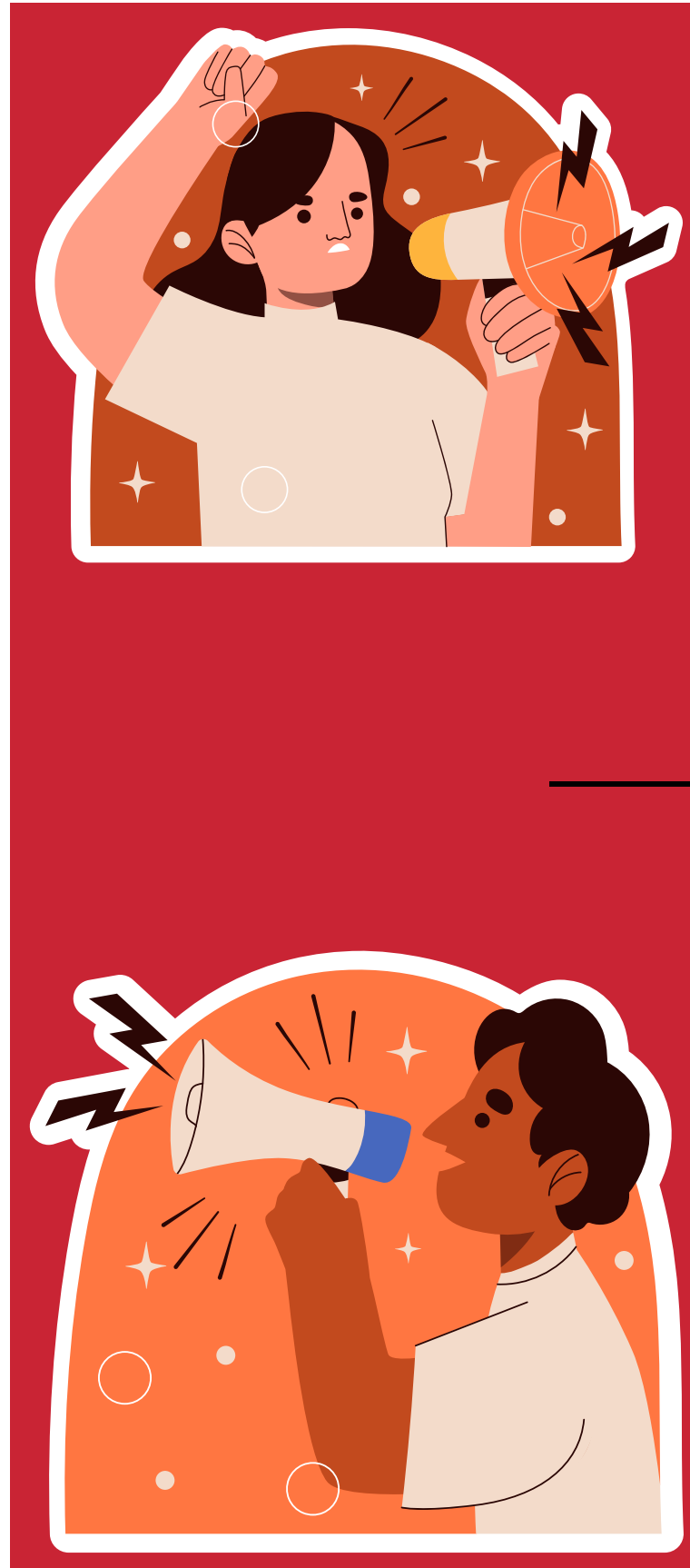
COURAGE



Quannah ChasingHorse

Qualities

- Strategic
- Empathetic
- Courage
- Creative
- Strength
- Energetic
- Optimistic
- Compassionate



Skills

- Writer/poet
- Community organizing
- Artist
- Public speaking
- Organized
- Problem-solving
- Takes action
- Good listener

What are some skills
and qualities of

Leaders?

USE THE LINK IN CHAT



What are some of your

Skills & Qualities?

USE THE LINK IN CHAT



|
youth voice is

POWERFUL

**YOUTH-LED POLICY
AND ADVOCACY IN
ACTION LOOKS LIKE
YOUTH WORKING IN
PARTNERSHIP WITH
DECISION MAKERS TO
CHANGE COMMUNITY
CONDITIONS (ACCESS,
MESSAGES, POLICIES,
SOCIAL NORMS) TO
INCREASE OVERALL
HEALTH OUTCOMES**

Example: Youth Leadership in Action



"Student Advocates Propose Policy to Implement Restorative Justice"

Example: Youth Leadership in Action



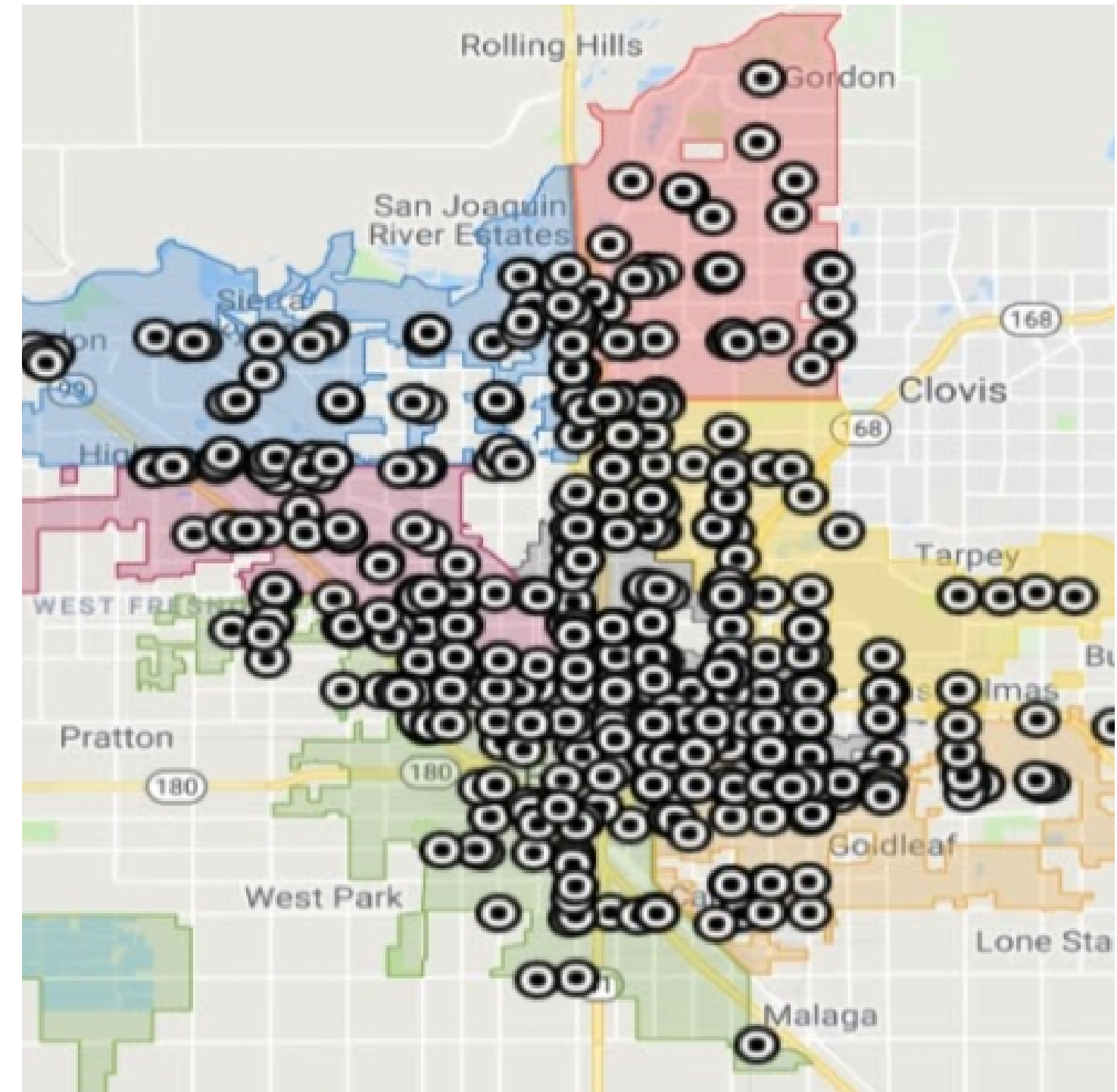
Youth in CA tackle increasing youth voice in mental health access in schools

Example: Youth Power in Action

In 2019, young people in Fresno, CA advocated for the City of Fresno to adopt the **"Responsible Neighborhood Market Ordinance."**

The policy, which was passed with an unanimous vote, puts a cap on the number of liquor licenses that can be distributed in Fresno.

The policy also established a 1,000 foot perimeter around spaces frequented by youth, like parks, community centers and churches.



Low-income neighborhoods and communities of color have a much higher concentration of liquor stores than other parts of Fresno.

|
youth voice is

POWERFUL

IN THE JAMBOARD,

**SHARE WITH US YOUR EXAMPLE
OF YOUTH LEADERSHIP IN YOUR
COMMUNITY.**

TRUE COLORS



Finding Your Leadership Style

- Better understand yourself and others
- Promote the appreciation of individual differences and strengths
- Foster self-awareness

(use True Colors pdf for activity)

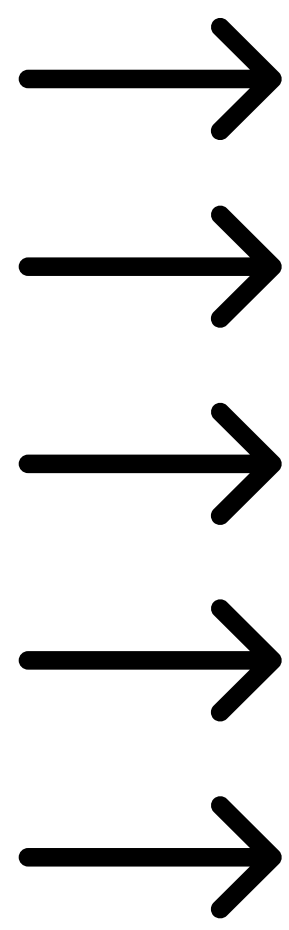


TRUE COLORS

There are five rows below with four groupings of adjectives in each row. Please look over each grouping of words and rate them using the following system:

- 4 - the most like you
- 2 - the third most like you
- 3 - the second most like you
- 1 - the least like you

Please repeat this for each row. Remember that there are no “wrong” or “right” answers to this exercise – so feel free to be honest! Good luck and have fun!



Active Opportunistic Spontaneous	Parental Traditional Responsible	Authentic Harmonious Compassionate	Versatile Competent Inventive
Competitive Impetuous Impactful	Practical Sensible Dependable	Unique Empathetic Communicative	Curious Conceptual Knowledgeable
Realistic Openminded Adventuresome	Loyal Conservative Organized	Devoted Warm Poetic	Theoretical Seeking Ingenious
Daring Impulsive Fun	Concerned Procedural Cooperative	Tender Inspirational Dramatic	Determined Complex Composed
Exciting Courageous Skillful	Orderly Conventional Caring	Vivacious Affectionate Sympathetic	Philosophical Principled Rational

Now total the columns. Your highest score indicates your primary or highest color, the lowest score represents the color that is least like you. Remember, we each have traces of all four colors in our own personal styles!

Total Orange:_____

Total Gold:_____

Total Blue:_____

Total Green:_____

(use True Colors pdf for activity)



ORANGE

I act on a moment's notice

Witty, Charming, Spontaneous

I consider life as a game, here and now

Impulsive, Generous, Impactful

I need fun, variety, stimulation and excitement

Optimistic, Eager, Bold

I value skill, resourcefulness, and courage

Physical, immediate, Fraternal

I am a natural trouble-shooter, a performer/competitor

I need to follow rules and respect authority

Loyal, Dependable, Prepared

I have a strong sense of what is right & wrong in life

Thorough, Sensible, Punctual

I need to be useful and to belong

Faithful, Stable, Organized

I value home, family and tradition

Caring, Concerned, Concrete

I am a natural preserver, a parent, a helper

GOLD

Intro to Youth Leadership

BLUE

I need to feel unique and authentic

Enthusiastic, Sympathetic, Personal

I look for meaning and significance in life

Warm, Communicative, Compassionate

I need to contribute, to encourage and to care

Idealistic, Spiritual, Sincere

I value integrity and unity in relationships

Peaceful, Flexible, Imaginative

I am a natural romantic, a poet, a nurturer

I seek knowledge and understanding

Analytical, Global, Conceptual

I live life by my own standards

Cool Calm, Collected

I need explanations and answers

Inventive, Logical, Perfectionist

I value intelligence, insight, fairness & justice

Abstract, Hypothetical, Investigative

I am a natural non-conformist, a visionary/problem solver

GREEN



True Colors Group Activity

Group Questions:

1. What about your color do you most identify with?
2. What is your greatest strength?

IN YOUR GROUPS ...

- **INTRODUCE YOURSELVES AND YOUR LEADERSHIP COLOR**
- **TAKE TURNS ANSWERING QUESTIONS (START WITH QUESTION 1 AND ONLY MOVE TO QUESTION 2 ONCE EVERYONE HAS ANSWERED QUESTION 1).**



Today we ...

- Learned about the power of youth leadership and advocacy
- Explored the qualities and skills of an effective leader
- Learned about your own leadership style through yli's True Colors leadership assessment
- Explored the leadership styles of your team/group.



TRAINING EVALUATION:





THANK YOU!